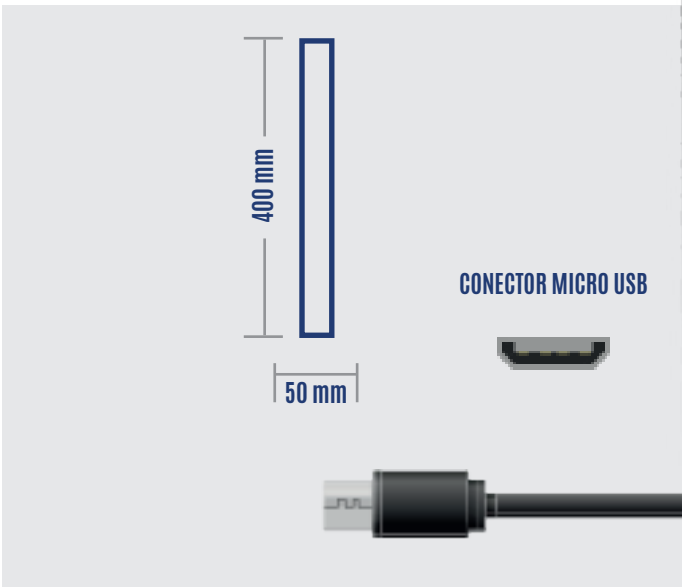
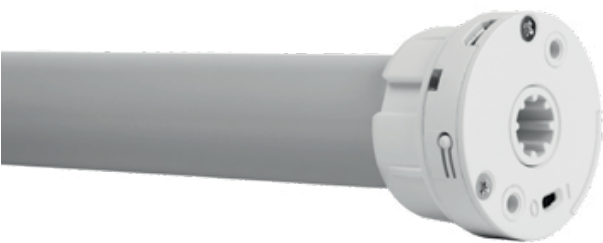


PANELES SOLARES MICRO USB & TIPO C

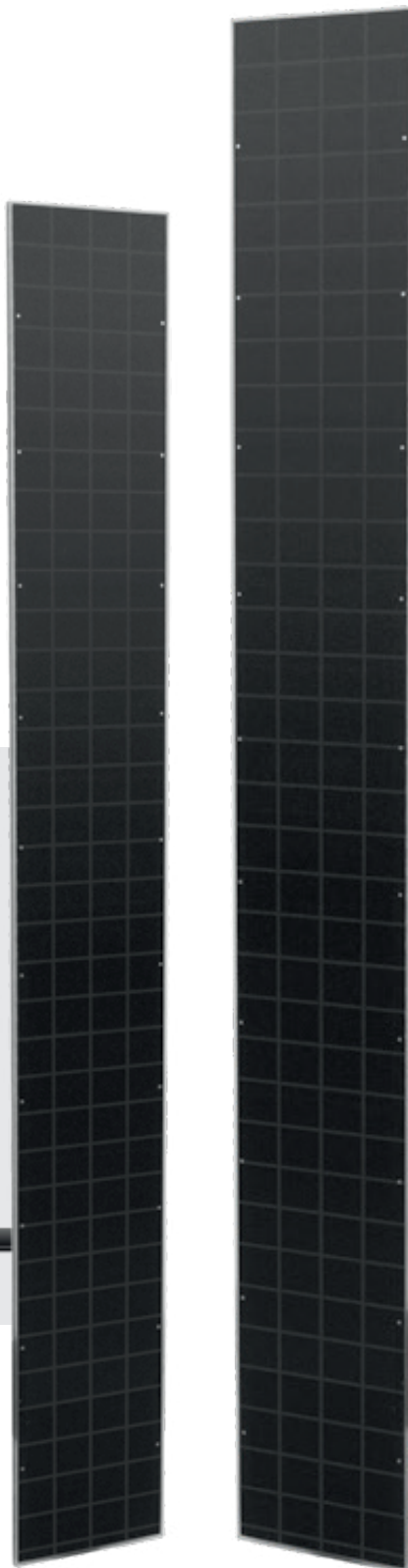
2531 2532

DATOS TÉCNICOS

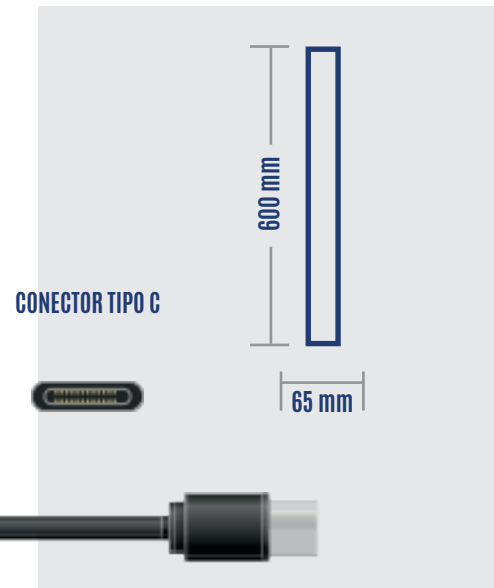
VOLTAJE	5 V
CORRIENTE	659 mA
EMISION	10 MILLIWATT
GRADO	IP55
ENERGIA	3 W



PARA MOTOR DE 25 mm



PARA MOTOR DE 35 mm



VOLTAJE	6.3 V
CORRIENTE	851 mA
PODER EMIS.	10 MILLIWATT
GRADO IMP.	IP55
ENERGIA	5.3 W